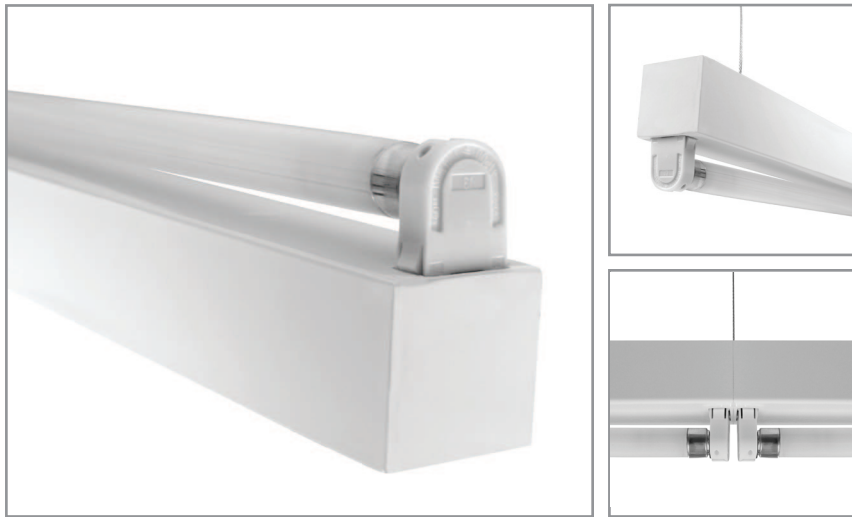


Linear T5 Clean Body fixture

Project: _____ Type: _____



FEATURES

The CB5 luminaire features a bare, linear T5 lamp on a clean, sheet formed strip, with minimal exposed hardware. The low profile housing accommodates a wide variety of ballasts. Mounting variations include surface, cable suspension and pendant.

SPECIFICATIONS

Fully assembled housing is formed and welded, 20 ga. steel, chemically treated to resist corrosion and enhance paint adhesion

Model variations offered for surface, cable suspended and pendant mount applications

Standard finishes include Fluoroscope White (semi-matte), white (semi-gloss), black, silver, platinum, bronze and primer powder coat, applied post production (consult factory for custom finishes)

An accessory symmetrical reflector in matching finish is available

Available for T5 14W, 21W, 28W, 35W and high output 24W, 39W, 54W, 80W lamps in single length, some tandem lengths and continuous runs

Standard ballast is specification grade 120V-277V program start (consult factory for other voltage options)

Dimming, emergency battery backup and specialized ballast factor options available (refer to supplemental ballast details sheet for availability)

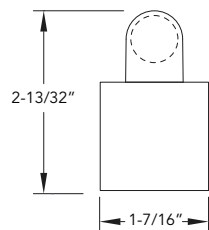
Knock outs on back of surface mount model accept standard electrical fittings by others (consult factory for other locations)

UL and C-UL listed for dry and damp locations

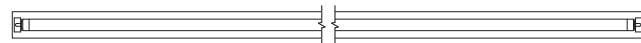
IBEW manufactured and assembled

Made in U.S.A.

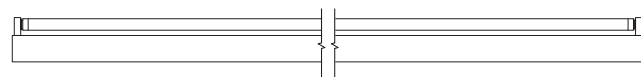
PROFILE



PLAN



SIDE

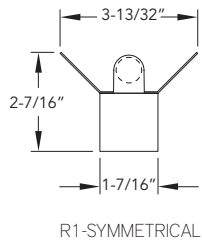


CB5 +

WATTS	VOLTAGE	BALLAST	MOUNT	RUN CONFIGURATION	FINISH
14: 14W - 22-5/8" 21: 21W - 34-3/8" 28: 28W - 46-3/16" 35: 35W - 58" 24: 24W HO - 22-5/8" 39: 39W HO - 34-3/8" 54: 54W HO - 46-3/16" 80: 80W HO - 58" 2121: 2x21W - 68-3/4" 2828: 2x28W - 92-7/16" 3939: 2x39W HO - 68-3/4" 5454: 2x54W HO - 92-7/16"	U: 120V-277V 347: 347V CF: consult factory for specialize voltage [Non-Dimming] PRS: program rapid start [Dimming] MKX: Advance Mark 10 VII: Advance Mark 7 ESYS: Lutron EcoSystem EHD: Lutron EcoSystem H HLM: Lutron Hi-Lume H300: Lutron Hi-Lume 3D PHO: Sylvania Helios DALI: Dali T5 (consult factory) SD95-50: Universal BallaSTAR SD115-50: Universal BallaSTAR	[Custom Performance] PH: 1.15BF program start PN85: 0.85BF program start PN90: 0.90BF program start PN95: 0.95BF program start [Emergency] L50: Bodine LP500 L55: Bodine LP5500 L60: Bodine LP600 L60S: Bodine LP600STU I28: Iota ISL-28 I54: Iota ISL-54 I540: Iota ISL-540-35W	SM: surface mount CM48: cable mount 48" cable length CM96: cable mount 96" cable length PM18: pendant mount 18" stem length PM24: pendant mount 24" stem length PM30: pendant mount 30" stem length CF: consult factory for custom mounting	SIN: single STA: starter ADD: adder TER: terminator	FW: Fluoroscope white (semi-matte) WH: white (semi-gloss) BL: black SL: silver PT: platinum BZ: bronze PR: primer CF: consult factory for custom color

ACCESSORIES

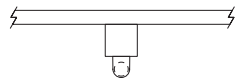
REFLECTORS | 20 ga. steel with white powder coat interior or .020" aluminum in specular (TR=95%) or semi-specular (TR=94%) interior finish



CB5	+		+		+		+	
		REFLECTOR STYLE		WATTS		INTERIOR FINISH		EXTERIOR FINISH
		R1-symmetrical		14: 14W 21: 21W 28: 28W 35: 35W 24: 24W HO 39: 39W HO 54: 54W HO 80: 80W HO 2121: 2x21W 2828: 2x28W 3939: 2x39W HO 5454: 2x54W HO		WH: white A1: specular A2: semi-specular CF: consult factory for custom color		FW: Fluoroscape white (semi-matte) WH: white (semi-gloss) BL: black SL: silver PT: platinum BZ: bronze PR: primer CF: consult factory for custom color

MOUNTING

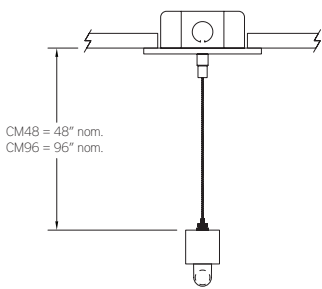
ORDERING CODE DESCRIPTION



SM

SURFACE MOUNT

Use appropriate fastener through $\varnothing 3/16$ " holes in housing

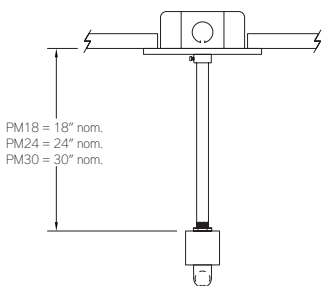


CM48 and CM96

CABLE MOUNT

Mounting option includes:

- $\varnothing 1/16$ " x 48" (CM48) or 96" (CM96) aircraft cables
- 18 gauge x 60" (CM48) or 102" (CM96) SJT power cable (in coordinating finish)
- Bracket bars
- $\varnothing 5$ " white power feed canopy
- $\varnothing 2$ " white canopy
- Ceiling couplers
- Low profile cable grippers



PM18, PM24, PM30

PENDANT MOUNT

Mounting option includes:

- $\varnothing 1/2$ " x 18" (PM18), 24" (PM24) or 30" (PM30) white steel stems
- Bracket bars
- $\varnothing 5$ " white canopies with integrated slip ring
- Hex nuts