

patent no. US 6,652,119 B1



MiT8

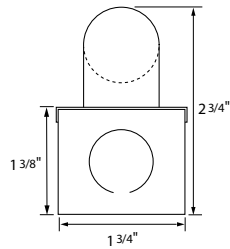
type:

LINEAR T8 FLUORESCENT

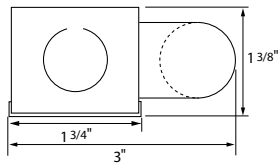
low profile T8 fluorescent fixture

- SPECIFICATIONS |**
- Fully assembled housing is formed and welded, 20 ga. steel, chemically treated to resist corrosion and enhance paint adhesion
 - Standard finish is high reflectance white powder coat, applied post production
 - Knock-outs accept standard electrical fittings (by others)
 - Rotational locking lamp holders
 - Available for one or two T8 17W, 25W, 32W or 40W linear fluorescent lamps
 - Standard Universal voltage electronic high power factor ballast is pre-wired to the lamp holders
 - Dimming and emergency battery back up options available (consult factory for availability and system compatibility)
 - UL and ULC listed for dry and damp locations
 - IBEW

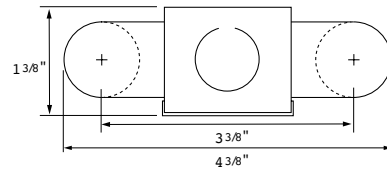
1T



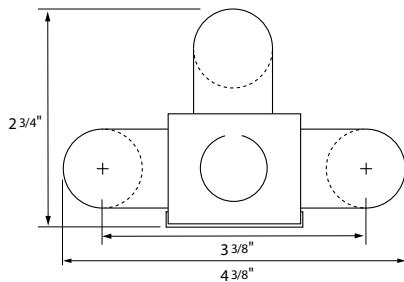
1S



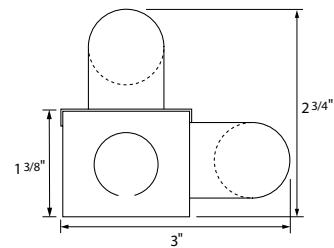
2S



3S



RA



SPECIFICATION / ORDER FORMAT					DIMENSIONAL INFO.
model no.	lamp position	wattage - lamp	voltage	options	overall length
MiT8	-1T	17 - 17w T8	/UNV	Dimming - (consult factory)	24"
	-1S	25 - 25w T8		/EB - emergency ballast (consult factory)	36"
	-2S	32 - 32w T8		/DL - damp location	48"
	-3S	40 - 40w T8		/CU - custom finish (consult factory)	60"
	-RA				

LENSES | Two-piece system comprised of polycarbonate channel and striated snap-on cover



U8LNP	Clear fine prismatic acrylic lens with mounting clips (sold by the foot)	__ft.
U8LNCF	Frosted acrylic lens with mounting clips (sold by the foot)	__ft.

TUBE GUARD |

TG	Tube Guard (sold by the foot)	__ft.
----	-------------------------------	-------

CABLE KIT |

BAC-4N-W	Aircraft suspension kit, 4', white
BAC-4P-W	Aircraft suspension kit w/ power feed, 4', white
	<small>*custom fixture layout required, consult factory</small>

REFLECTORS | 20 ga. steel construction, white powder coat finish (consult factory for optional reflector materials and finishes)

<p>R1</p>	SYMMETRICAL	for fixture model
	MiT8-1T-R1-17	MiT8-1T17
	MiT8-1T-R1-25	MiT8-1T25
	MiT8-1T-R1-32	MiT8-1T32
	MiT8-1T-R1-40	MiT8-1T40
<p>R2</p>	ASYMMETRICAL	MiT8-1T17
	MiT8-1T-R2-17	MiT8-1T25
	MiT8-1T-R2-25	MiT8-1T32
	MiT8-1T-R2-32	MiT8-1T40
	MiT8-1T-R2-40	
<p>R3</p>	INSIDE ASYMMETRICAL	MiT8-1T17
	MiT8-1T-R3-17	MiT8-1T25
	MiT8-1T-R3-25	MiT8-1T32
	MiT8-1T-R3-32	MiT8-1T40
	MiT8-1T-R3-40	
<p>RE</p>	ELLIPTICAL	MiT5-1T17
	MiT8-1T-RE-17	MiT5-1T25
	MiT8-1T-RE-25	MiT5-1T32
	MiT8-1T-RE-32	MiT5-1T40
	MiT8-1T-RE-40	
<p>R4</p>	MiT8-1S-R4-17	MiT8-1S17
	MiT8-1S-R4-25	MiT8-1S25
	MiT8-1S-R4-32	MiT8-1S32
	MiT8-1S-R4-40	MiT8-1S40
<p>R5</p>	MiT8-2S-R5-17	MiT8-2S17
	MiT8-2S-R5-25	MiT8-2S25
	MiT8-2S-R5-32	MiT8-2S32
	MiT8-2S-R5-40	MiT8-2S40