

patent no. US 6,652,119 B1



# MiT8

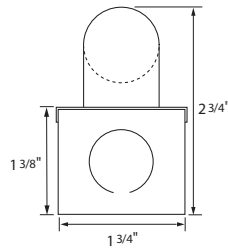
type:

## LINEAR T8 FLUORESCENT

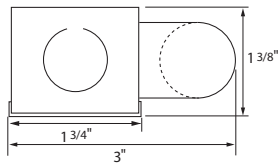
low profile T8 fluorescent fixture

- SPECIFICATIONS |**
- Fully assembled housing is formed and welded, 20 ga. steel, chemically treated to resist corrosion and enhance paint adhesion
  - Standard finish is high reflectance white powder coat, applied post production
  - Knock-outs accept standard electrical fittings (by others)
  - Rotational locking lamp holders
  - Available for one or two T8 17W, 25W, 32W or 40W linear fluorescent lamps
  - Standard Universal voltage electronic high power factor ballast is pre-wired to the lamp holders
  - Dimming and emergency battery back up options available (consult factory for availability and system compatibility)
  - UL and ULC listed for dry and damp locations
  - IBEW

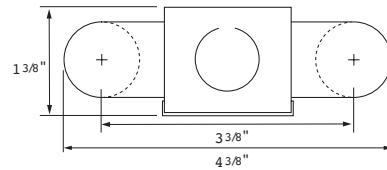
1T



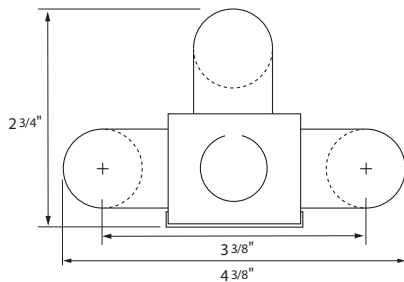
1S



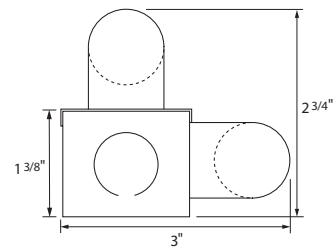
2S



3S



RA



SPECIFICATION / ORDER FORMAT					DIMENSIONAL INFO.
model no.	lamp position	wattage - lamp	voltage	options	overall length
MiT8	-1T	17 - 17w T8	/UNV	Dimming - (consult factory)	24"
	-1S	25 - 25w T8		/EB - emergency ballast (consult factory)	36"
	-2S	32 - 32w T8		/DL - damp location	48"
	-3S	40 - 40w T8		/CU - custom finish (consult factory)	60"
	-RA				

**LENSES** | Two-piece system comprised of polycarbonate channel and striated snap-on cover



U8LNP	Clear fine prismatic acrylic lens with mounting clips (sold by the foot)	__ft.
U8LNCF	Frosted acrylic lens with mounting clips (sold by the foot)	__ft.

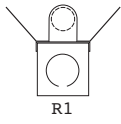
**TUBE GUARD** |

TG	Tube Guard (sold by the foot)	__ft.
----	-------------------------------	-------

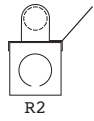
**CABLE KIT** |

BAC-4N-W	Aircraft suspension kit, 4', white
BAC-4P-W	Aircraft suspension kit w/ power feed, 4', white

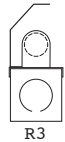
**REFLECTORS** | 20 ga. steel construction, white powder coat finish (consult factory for optional reflector materials and finishes)



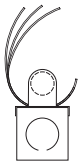
<b>SYMMETRICAL</b>	<b>for fixture model</b>
MiT8-1T-R1-17	MiT8-1T17
MiT8-1T-R1-25	MiT8-1T25
MiT8-1T-R1-32	MiT8-1T32
MiT8-1T-R1-40	MiT8-1T40



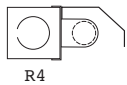
<b>ASYMMETRICAL</b>	MiT8-1T17
MiT8-1T-R2-17	MiT8-1T25
MiT8-1T-R2-25	MiT8-1T32
MiT8-1T-R2-32	MiT8-1T40
MiT8-1T-R2-40	



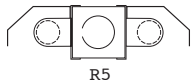
<b>INSIDE ASYMMETRICAL</b>	MiT8-1T17
MiT8-1T-R3-17	MiT8-1T25
MiT8-1T-R3-25	MiT8-1T32
MiT8-1T-R3-32	MiT8-1T40
MiT8-1T-R3-40	



<b>ELLIPTICAL</b>	MiT5-1T17
MiT8-1T-RE-17	MiT5-1T25
MiT8-1T-RE-25	MiT5-1T32
MiT8-1T-RE-32	MiT5-1T40
MiT8-1T-RE-40	



MiT8-1S-R4-17	MiT8-1S17
MiT8-1S-R4-25	MiT8-1S25
MiT8-1S-R4-32	MiT8-1S32
MiT8-1S-R4-40	MiT8-1S40



MiT8-2S-R5-17	MiT8-2S17
MiT8-2S-R5-25	MiT8-2S25
MiT8-2S-R5-32	MiT8-2S32
MiT8-2S-R5-40	MiT8-2S40