

patent no. US 6,652,119 B1



# MiT5

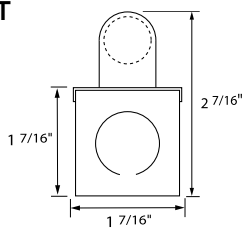
type:

## LINEAR T5 FLUORESCENT

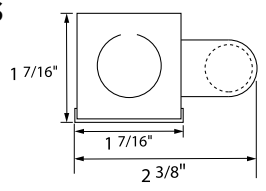
low profile T5 fluorescent fixture

- SPECIFICATIONS |**
- Fully assembled housing is formed and welded, 20 ga. steel, chemically treated to resist corrosion and enhance paint adhesion
  - Standard finish is high reflectance white powder coat, matte black, or glossy black applied post production
  - Knock-outs accept standard electrical fittings (by others)
  - Rotational locking lamp holders
  - Available for one or two T5 14W, 21W, 28W, 35W and high output 24W, 39W, 54W, 80W linear fluorescent lamps
  - Standard 120V or 277V, 50-60Hz electronic high power factor ballast is pre-wired to the lamp holders
  - Dimming and emergency battery back up options available (**consult factory for availability and system compatibility**)
  - UL and ULC listed for dry and damp locations
  - IBEW
  - Made in the U.S.A.
- NOTE: Includes program rapid start ballast.**

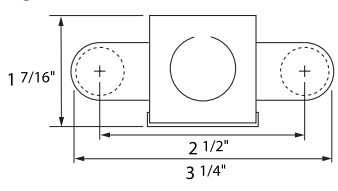
1T



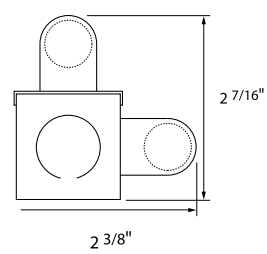
1S



2S



RA



SPECIFICATION / ORDER FORMAT						DIMENSIONAL INFO.
model no.	lamp position	wattage - lamp	voltage	wiring method	options	overall length
MiT5	-1T	14 - 14w T5	/UNV-120-277V	/RS	Dimming - (consult factory)	22-1/2"
	-1S	21 - 21w T5	/347		/EB - emergency ballast	34-5/16"
	-2S	28 - 28w T5			(consult factory)	46-1/16"
	-RA	35 - 35w T5			/DL - damp location	57-15/16"
		24 - 24w T5 HO			/CU - custom finish	22-1/2"
		39 - 39w T5 HO			(consult factory)	34-5/16"
		54 - 54w T5 HO				46-1/16"
		80 - 80w T5 HO				57-15/16"

**LENSES** | Two-piece system comprised of polycarbonate channel and striated snap-on cover



M5LNP	Clear fine prismatic acrylic lens with mounting clips (sold by the foot)	___ft.
M5LNCF	Frosted acrylic lens with mounting clips (sold by the foot)	___ft.

**TUBE GUARD** |

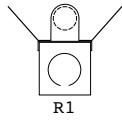
TG	Tube Guard (sold by the foot)	___ft.
----	-------------------------------	--------

**CABLE KIT** |

BAC-4N-W	Aircraft suspension kit, 4', white
BAC-4P-W	Aircraft suspension kit w/ power feed, 4', white

\*custom fixture layout required, consult factory

**REFLECTORS** | 20 ga. steel construction, white powder coat finish (consult factory for optional reflector materials and finishes)

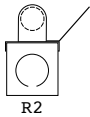


**SYMMETRICAL**

MiT5-1T-R1-14/24
MiT5-1T-R1-21/39
MiT5-1T-R1-28/54
MiT5-1T-R1-35/80

**for fixture models**

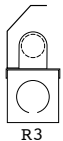
MiT5-1T14	MiT5-1T24
MiT5-1T21	MiT5-1T39
MiT5-1T28	MiT5-1T54
MiT5-1T35	MiT5-1T80



**ASYMMETRICAL**

MiT5-1T-R2-14/24
MiT5-1T-R2-21/39
MiT5-1T-R2-28/54
MiT5-1T-R2-35/80

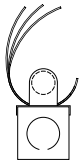
MiT5-1T14	MiT5-1T24
MiT5-1T21	MiT5-1T39
MiT5-1T28	MiT5-1T54
MiT5-1T35	MiT5-1T80



**INSIDE ASYMMETRICAL**

MiT5-1T-R3-14/24
MiT5-1T-R3-21/39
MiT5-1T-R3-28/54
MiT5-1T-R3-35/80

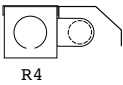
MiT5-1T14	MiT5-1T24
MiT5-1T21	MiT5-1T39
MiT5-1T28	MiT5-1T54
MiT5-1T35	MiT5-1T80



**ELLIPTICAL**

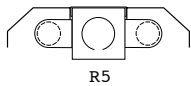
MiT5-1T-RE-14/24
MiT5-1T-RE-21/39
MiT5-1T-RE-28/54
MiT5-1T-RE-35/80

MiT5-1T14	MiT5-1T24
MiT5-1T21	MiT5-1T39
MiT5-1T28	MiT5-1T54
MiT5-1T35	MiT5-1T80



MiT5-1S-R4-14/24
MiT5-1S-R4-21/39
MiT5-1S-R4-28/54
MiT5-1S-R4-35/80

MiT5-1S14	MiT5-1S24
MiT5-1S21	MiT5-1S39
MiT5-1S28	MiT5-1S54
MiT5-1S35	MiT5-1S80



MiT5-2S-R5-14/24
MiT5-2S-R5-21/39
MiT5-2S-R5-28/54
MiT5-2S-R5-35/80

MiT5-2S14	MiT5-2S24
MiT5-2S21	MiT5-2S39
MiT5-2S28	MiT5-2S54
MiT5-2S35	MiT5-2S80