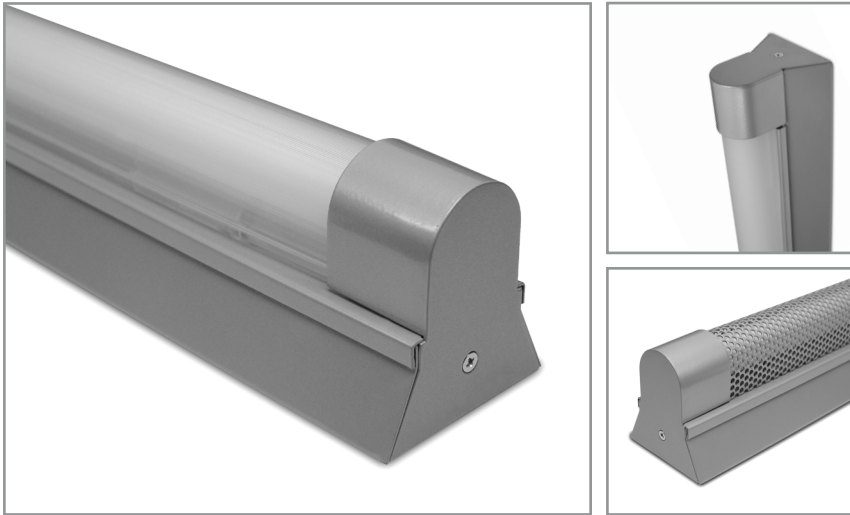


Triangular body, linear T8 fluorescent fixture with lens and decorative end caps

Project: \_\_\_\_\_ Type: \_\_\_\_\_



## FEATURES

The Elytron Collection features clean, linear fixture bodies and simple decorative caps to conceal the darkness associated with the ends of T8 lamps and sockets. Though kept to a minimum, the profile is still large enough to accept a wide variety of popular ballasts. Multiple lens options are available for this sleek surface mount luminaire.

## SPECIFICATIONS

Fully assembled housing is formed and welded, 20 ga. steel, chemically treated to resist corrosion and enhance paint adhesion

Model offered for surface mount applications

Available in standard white, black, silver, platinum, bronze and primer powder coat, applied post production (consult factory for custom finishes)

Lens options include linear prismatic and frosted acrylic lens or perforated steel cover

Available for T8 17W, 25W, 32W and 40W lamps in single, some tandem lengths and continuous runs

Standard ballast is specification grade 120V-277V instant start (consult factory for other voltage options)

Dimming, emergency battery backup and specialized ballast factor options available (refer to supplemental ballast details sheet for availability)

Knock outs on rear accept standard electrical fittings by others (consult factory for other locations)

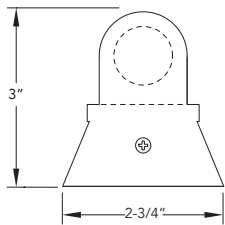
Rotational locking lamp holders

UL and C-UL listed for dry and damp locations

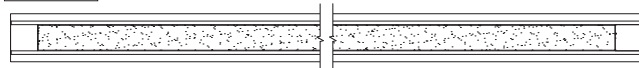
IBEW manufactured and labeled

Made in the U.S.A.

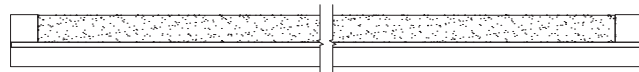
## PROFILE



## PLAN



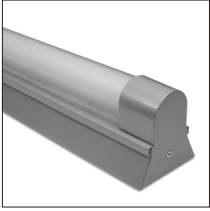
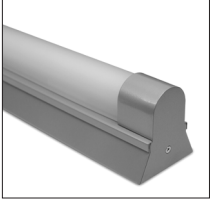

## SIDE



## IST8Q +

<b>WATTS</b> 17: 17W - 24-3/16" 25: 25W - 36-3/16" 32: 32W - 48-3/16" 40: 40W - 59-15/16" 2525: 2x25W - 72-1/4" 3232: 2x32W - 96-1/4"	<b>VOLTAGE</b> U: 120V-277V 347: 347V CF: consult factory for specialize voltage  <b>[Non-Dimming]</b> IS: Instant Start  <b>[Dimming]</b> H300: Lutron Hi-Lume 3D H317: Lutron Hi-Lume 3D TWR: Lutron Tu-Wire ESYS: Lutron EcoSystem EHD: Lutron EcoSystem H DALI: Dali T8 (Consult Factory)	<b>BALLAST</b>  <b>[Emergency]</b> I28: Iota ISL-28 I54: Iota ISL-54 I540: Iota ISL-540 L50: Bodine LP500 LB51: Bodine B50LP LB52: Bodine B50LP L55: BodineLP550 L60: Bodine LP600 L60S: Bodine LP600STU	<b>LENS</b> F: frosted P: linear prismatic Perf: perforated steel cover  SM: surface mount	<b>MOUNT</b>  <b>RUN CONFIGURATION</b> SIN: single STA: starter ADD: adder TER: terminator	<b>FINISH</b> WH: white BL: black SL: silver PT: platinum BZ: bronze PR: primer CF: consult factory for custom color
---	---	---	---	--	---

LENS OPTIONS

	ORDERING CODE	DESCRIPTION
	P	Linear prismatic acrylic lens
	F	Frosted acrylic lens
	PERF	Perforated steel cover in matching finish, 9/64" dia. holes on 3/16" staggered centers, 51% open

MOUNTING

	ORDERING CODE	DESCRIPTION
	SM	SURFACE MOUNT Use appropriate fastener through Ø3/16" holes in housing