

# BCR100 | Closet Rod

Ø1-3/8" LED closet rod luminaire, remote driver



Project: \_\_\_\_\_ Type: \_\_\_\_\_



## FEATURES

The BCR100 is a 1-3/8" O.D. extruded aluminum LED luminaire designed for installation as an illuminated closet rod. Light diffused through a frosted acrylic lens is directed downward onto hanging clothes and into the closet space. The slender fixture housing is secured to walls or millwork with clean, machined aluminum mounting cups. For longer lengths, fixed and adjustable intermediate supports are available.

## SPECIFICATIONS

Fixture constructed of an extruded aluminum housing, extruded, frosted acrylic lens and sheet aluminum end caps

Fixture mounts to closet walls with machined aluminum cup-style holders

Standard finishes as shown below

Available for closet openings of 2' – 8' nominal

Fixed length or adjustable intermediate supports required for fixture lengths over 34-15/16" with 33 lbs. capacity for every 36" of length between supports

Fixture housings cut to length in 1/16" increments based on 11" length LED board modules

Fixtures wired with 10' low voltage leads

Included standard remote 120-277V driver offered with 0-10V dimming or non-dim (other dimming driver options available)

Standard output is 480 lumens per foot

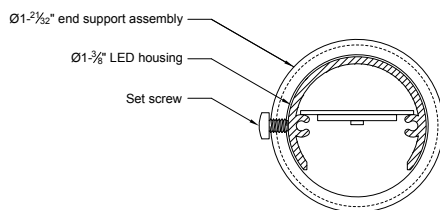
LEDs available in 2700K, 3000K, 3500K, and 4000K, within a 3 step MacAdam ellipse, all with 90+ CRI typical

Life: 50,000 hours L<sub>70</sub>

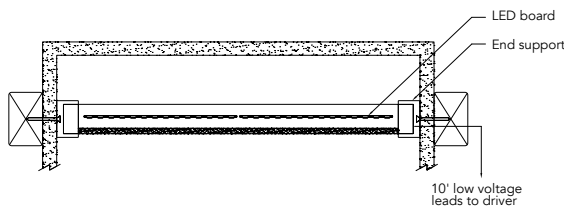
Limited five year warranty

UL and C-UL listed for storage spaces

## SECTION



## SIDE



## PERFORMANCE

NOMINAL LENGTH	OUTPUT	LUMENS/FT	WATTS/FT	LUMINAIRE LUMENS	EFFICACY (LPW)
4'	R: regular	480	5.6	1819	87

Note: All data reflects fixtures with 3500K LEDs



## BCR100 –

### INSIDE CLEAR DIMENSION\*\*

23-15/16 – 34-7/8" (2 LED boards)  
34-15/16 – 45-7/8" (3 LED boards) †  
45-15/16 – 56-7/8" (4 LED boards) †  
56-15/16 – 67-7/8" (5 LED boards) †  
67-15/16 – 78-7/8" (6 LED boards) †  
78-15/16 – 89-7/8" (7 LED boards) †  
89-15/16 – 96" (8 LED boards) †

### CORRELATED COLOR TEMPERATURE

27: 2700K-90+ CRI  
30: 3000K-90+ CRI  
35: 3500K-90+ CRI  
40: 4000K-90+ CRI

### DRIVER

ND: non-dimming  
**[Dimming]**  
DM: 0-10V, 1%  
HES: Lutron EcoSystem, soft-on/fade-to-black, 1%  
H2: Lutron Hi-Lume 2-wire forward phase, 1%, (120V ONLY)  
EL: eldoLED ECOdrive, 0-10V, 1%  
ES: eldoLED SOLOdrive 0-10V, 0.1%  
ELD: eldoLED ECOdrive DALI, 1%  
ESD: eldoLED SOLOdrive DALI, 0.1%

### LIGHT OUTPUT (lumens per foot)

R: regular – 480

### FINISH

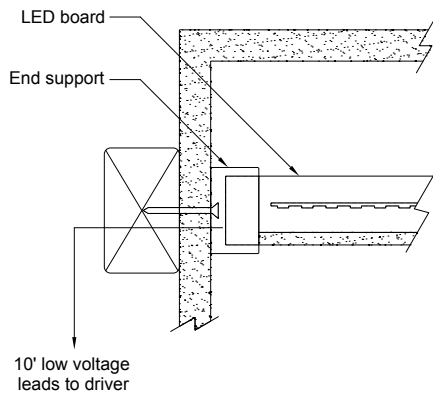
AW: architectural white (semi-matte)  
WH: white (semi-gloss)  
BL: black (semi-matte)  
MB: matte black  
ESS: environmental satin silver  
BZ: bronze  
PR: primer  
CF: consult factory for custom finish  
SA: satin anodize (may require additional lead time)

Note: Each fixture includes a remote driver matched for fixture length and light output  
\*\* Specify Inside Clear dimension between end mounting surfaces to the nearest 1/16"  
† Requires intermediate support, ordered separately

# BCR100 | Closet Rod

Ø1-3/8" LED closet rod luminaire, remote driver

## MOUNTING



- Use appropriate #10 fastener into adequate blocking for securing end holders to mounting surface
- Trim collars slip over the end holders and secure with a set screw
- Fixtures longer than 34-15/16" require intermediate supports

## INTERMEDIATE SUPPORT

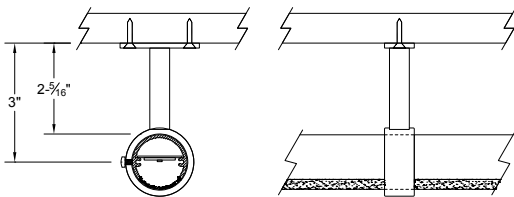
REQUIRED for fixtures longer than 34-15/16". Consult length/mounting dimensions table for details. Use appropriate fasteners into adequate blocking for securing support components to mounting surface.

### ORDERING CODE

### DESCRIPTION

### SPECIFICATIONS

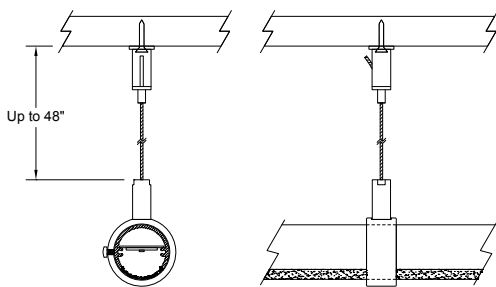
#### BCR100-SSF-FINISH



Supplemental rod support – fixed length

- Machined aluminum assembly locates top of rod 2-5/16" below ceiling or shelf to clear typical hanger hooks
- All components finished to match – use the fixture finish code

#### BCR100-SSA-FINISH



Supplemental rod support – adjustable length

- Includes machined aluminum support ring, Ø1/16" x 48" aircraft cable, coupler, and gripper
- Rod support ring finished to match – use the fixture finish code
- Cable coupler and gripper available in zinc finish only

# BCR100 | Closet Rod

Ø1-3/8" LED closet rod luminaire, remote driver

## LENGTH/MOUNTING DIMENSIONS

Note: Fixture light source based on 11" nominal length LED boards. Specify "Inside Clear" dimension to the nearest 1/16" within the range for a given number of LED boards. Manufactured length tolerance is  $\pm 1/16"$ . Intermediate supports required for fixtures longer than 34-15/16". Supports should be located equidistant from fixture ends

INSIDE CLEAR DIMENSION	LED BOARD QUANTITY	REQUIRED INTERMEDIATE SUPPORT QTY.
23-15/16 – 34-7/8"	2	-
34-15/16 – 45-7/8"	3	1
45-15/16 – 56-7/8"	4	1
56-15/16 – 67-7/8"	5	2
67-15/16 – 78-7/8"	6	2
78-15/16 – 89-7/8"	7	2
89-15/16 – 96"	8	2

Fixture lengths closer to the minimum range results in reduced dark area across the lens.

Example of a fixture with two LED boards

