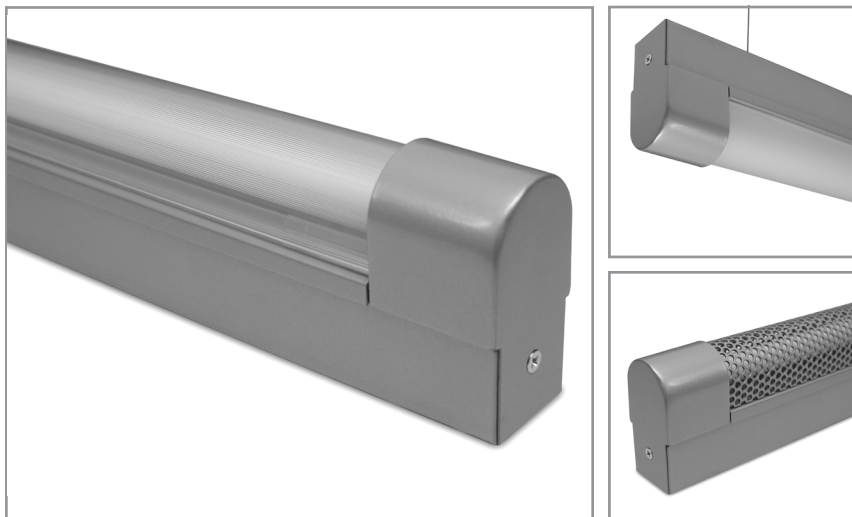


IST5R | ELYTRON COLLECTION



Round top, linear T5 fluorescent fixture with lens and decorative end caps

Project: _____ Type: _____



FEATURES

The Elytron Collection features clean, linear fixture bodies and simple decorative caps to conceal the darkness associated with the ends of T5 lamps and sockets. Though kept to a minimum, the profile is still large enough to accept a wide variety of popular ballasts. Multiple lens and three mounting options further broaden the versatility of this sleek luminaire.

SPECIFICATIONS

Fully assembled housing is formed and welded, 20 ga. steel, chemically treated to resist corrosion and enhance paint adhesion

Model variations offered for surface, cable suspended and pendant mount applications

Standard finishes include Fluoroscope White (semi-matte), white (semi-gloss), black (semi-matte), matte black, silver, platinum*, bronze and primer powder coat, applied post production (consult factory for custom finishes)

Options include frosted and linear prismatic acrylic lens or perforated steel cover

Available for T5 14W, 21W, 28W, 35W and high output 24W, 39W, 54W, 80W linear fluorescent lamps in single, some tandem lengths and continuous runs

Standard ballast is specification grade 120V-277V program start (consult factory for other voltage options)

Dimming, emergency battery backup and specialized ballast factor options available (refer to supplemental ballast details sheet for availability)

Knock-outs on back of surface mount model accept standard electrical fittings by others (consult factory for other locations)

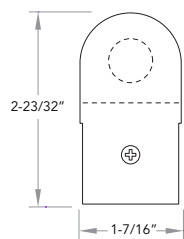
Rotational locking lamp holders

UL and C-UL listed for dry and damp locations

IBEW manufactured and labeled

Made in the U.S.A.

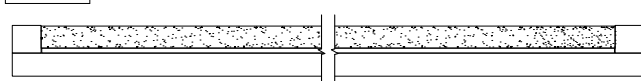
PROFILE



PLAN



SIDE

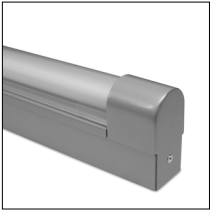




IST5R +

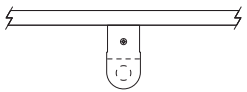
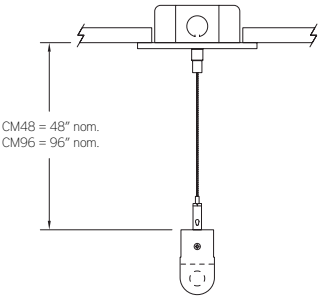
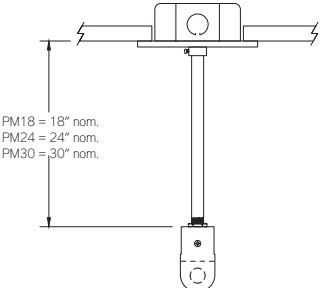
WATTS	VOLTAGE	BALLAST	LENS	MOUNT	FINISH
14: 14W - 22-9/16" 21: 21W - 34-3/8" 28: 28W - 46-3/16" 35: 35W - 58" 2121: 2x21W - 68-5/8" 2828: 2x28W - 92-1/4" 24: 24W HO - 22-9/16" 39: 39W HO - 34-3/8" 54: 54W HO - 46-3/16" 80: 80W HO - 58" 3939: 2x39W HO - 68-5/8" 5454: 2x54W HO - 92-1/4"	U: 120V-277V 347: 347V CF: consult factory for specialize voltage [Non-Dimming] PRS: program rapid start [Dimming] MKX: Advance Mark 10 VII: Advance Mark 7 ESYS: Lutron EcoSystem EHD: Lutron EcoSystem H HLM: Lutron Hi-Lume H300: Lutron Hi-Lume 3D PHO: Sylvania Helios DALI: Dali T5 (consult factory) SD95-50: Universal BallaSTAR SD115-50: Universal BallaSTAR	[Custom Performance] PH: 1.15BF program start PN70: 0.70BF program start PN85: 0.85BF program start PN90: 0.90BF program start PN95: 0.95BF program start [Emergency] L50: Bodine LP500 L55: Bodine LP5500 L60: Bodine LP600 I28: Iota ISL-28 I54: Iota ISL-54 I540: Iota ISL-540-35W	F: frosted P: linear prismatic Perf: perforated steel cover** SM: surface mount CM48: cable mount 48" cable length CM96: cable mount 96" cable length PM18: pendant mount 18" stem length PM24: pendant mount 24" stem length PM30: pendant mount 30" stem length CF: consult factory for custom mounting	RUN CONFIGURATION SN: single ST: starter AD: adder TR: terminator	FW: Fluoroscope white (semi-matte) WH: white (semi-gloss) BL: black (semi-matte) MB: matte black SL: silver PT: platinum* BZ: bronze PR: primer CF: consult factory for custom finish

* A standard finish requiring a 2 step coating process, premium will apply
 ** Additional per foot costs apply

LENS OPTIONS

	ORDERING CODE	DESCRIPTION
	P	Linear prismatic acrylic lens
	F	Frosted acrylic lens
	PERF	Perforated steel cover in matching finish, 9/64" dia. holes on 3/16" centers, 51% open ADDITIONAL PER FOOT COSTS APPLY

MOUNTING

	ORDERING CODE	DESCRIPTION
	SM	SURFACE MOUNT Use appropriate fastener through Ø3/16" holes in housing
	CM48 and CM96	CABLE MOUNT Mounting option includes: <ul style="list-style-type: none"> • Ø 1/16" x 48" (CM48) or 96" (CM96) aircraft cables • 18 gauge x 60" (CM48) or 108" (CM96) SJT power cable (in coordinating finish) • Bracket bars • Ø 5" white canopies • Ceiling couplers • Side exit cable grippers
	PM18, PM24, PM30	PENDANT MOUNT Mounting option includes: <ul style="list-style-type: none"> • Ø 1/2" x 18" (PM18), 24" (PM24) or 30" (PM30) white steel stems • Bracket bars • Ø 5" white canopies with integrated slip ring • Hex nuts