



BARTCO LIGHTING | 2015 PRODUCT GUIDE

# VISIONS BROUGHT TO LIGHT

[bartcoLIGHTING.com](http://bartcoLIGHTING.com) | 714.230.3200 | 5761 Research Drive Huntington Beach, CA 92649

© 2015 Bartco Lighting, Inc. All Rights Reserved. This catalog is intended to be a guide. Products are subject to change without notice. Please consult website cutsheets or the factory for specifics. The products in this catalog are protected by patents and patents pending. No reuse or reproduction of photographs, drawings, or copy is allowed. Bartco Lighting reserves the right to discontinue or to change design or technical specifications of any product at any time without notification. All lamps must be ordered/specified separately. Not all fixtures can be used with all light sources. Elytron Collection, Essence Collection, Element Collection, BAM, MIT5, MIT8, All Weather, BT6, BT5, STUDIO by bartco, ECO5, ECO8, R10, Bodhi, and Tubular are trademarks of Bartco Lighting, Inc.

# TABLE OF CONTENTS

ALL WEATHER	8
BT6	9
BODHI	10
COVE	12
ELEMENT	14
ELYTRON	16
ESSENCE	18
INWALL	20
STUDIO	20
STRIPS	22
TUBULAR	24
TASK	26
INSPIRATION	28

## ACCESSORIES

REF = REFLECTORS  
LNS = LENSES  
MC = MOUNTING CLIPS  
TG = TUBE GUARD  
FF = DOWNTUBE FEED/  
STEM MOUNT FEED

EC = END CAP  
QC = PLUG & PLAY QUICK CONNECT  
JP = JUMP PLUG  
BAC = AIR CRAFT CABLE SUSPENSION KIT  
BAM = ARM MOUNT KIT  
PM = PENDANT MOUNT

## OPTIONS

DIM = DIMMING  
EM = EMERGENCY  
CU = CUSTOM FINISH  
CB = CLEAN BODY HOUSING

COLUMBIA BUILDING  
Portland, OR

BC7418 - custom T5 installation  
lighting design: Biella Lighting Design  
photography: Jeremy Bitterman

ALL BARTCO LIGHTING FIXTURES ARE MANUFACTURED AND ASSEMBLED IN THE USA BY UNION WORKERS.





PIER 15  
New York, NY  
BW5 - cove lighting  
lighting design: Tillotson Design Associates  
photography: John Muggenborg Photography

# BT6

The BT6 product family is designed around the exclusive T6 linear fluorescent lamp. The unique form factor produces seamless indirect illumination with our specification grade strip models. Additionally, the elegant lamp shape and high quality color, make the T6 a great choice for direct general illumination and vanity lighting with Bartco Lighting's refined fixture designs.

## T6 STRIPS //

<p><b>BT6100</b></p> <p>OPTIONS   DIM   EM   CU ACCESSORIES   REF   LNS</p>	<p><b>BT6105</b></p> <p>OPTIONS   CU ACCESSORIES   REF   LNS <small>remote ballast (ballast ordered separately)</small></p>	<p><b>BT6110</b></p> <p>OPTIONS   DIM   EM   CU ACCESSORIES   REF   LNS</p>	<p><b>BT6115</b></p> <p>OPTIONS   DIM   EM   CU ACCESSORIES   REF   LNS</p>
<p><b>BT6200</b></p> <p>OPTIONS   DIM   EM   CU</p>	<p><b>BT6300</b></p> <p>OPTIONS   DIM   EM   CU ACCESSORIES   REF</p>	<p><b>BT6400</b></p> <p>OPTIONS   DIM   EM   CU ACCESSORIES   REF</p>	<p><b>BT6405</b></p> <p>OPTIONS   DIM   EM   CU ACCESSORIES   REF</p>



# ALL WEATHER

Bartco Lighting's ALL WEATHER series of luminaires is ideal for integrating linear fluorescent lamps into exterior lighting applications. The heavy gauge, fully welded, and powder coated fixture is IP-65 rated to perform reliably through rough weather conditions. Models are offered for T5 and T8 fluorescent sources in single lamp and staggered configurations.



## T5 STRIPS //

<p><b>BW5</b></p> <p>OPTIONS   DIM   CU</p>	<p><b>BW5-S</b></p> <p>OPTIONS   DIM   CU</p>	<p><b>BW8</b></p> <p>OPTIONS   DIM   CU</p>	<p><b>BW8-S</b></p> <p>OPTIONS   DIM   CU</p>
---	---	---	---

## T8 STRIPS //



STRIPES HEADQUARTERS  
Water Mill, NY  
BT6400 - general illumination  
design firm: ICRAVE  
photography: John Muggenborg

# BODHI

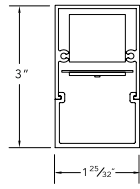


BSS210

Refined rectangular extruded profiles, quality LED components, and frosted acrylic lenses define the purpose of the Bodhi series luminaires. These capable, general lighting fixtures are available in a variety of integral and remote driven profiles and can be surface mounted or cable suspended. Several LED color, output, and driver options add further versatility.

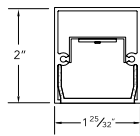
LED //

BSS205



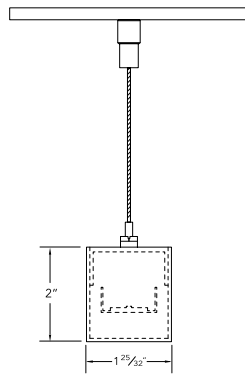
OPTIONS | DIM | EM | CU  
ACCESSORIES | BAC  
remote driver (ordered separately)

BSS220



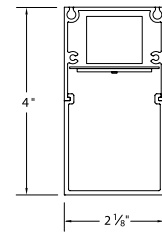
OPTIONS | DIM | EM | CU  
ACCESSORIES | BAC  
remote driver (ordered separately)

BSS235



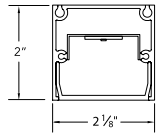
OPTIONS | DIM | EM | CU  
remote driver (ordered separately)

BSS210



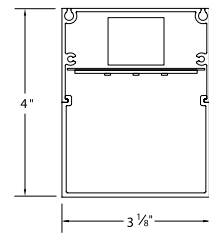
OPTIONS | DIM | EM | CU  
ACCESSORIES | BAC  
remote driver (ordered separately)

BSS225



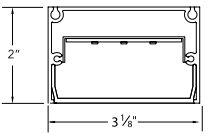
OPTIONS | DIM | EM | CU  
ACCESSORIES | BAC  
remote driver (ordered separately)

BSS215



OPTIONS | DIM | EM | CU  
ACCESSORIES | BAC  
remote driver (ordered separately)

BSS230



OPTIONS | DIM | EM | CU  
ACCESSORIES | BAC  
remote driver (ordered separately)



TRIP ADVISOR HEADQUARTERS  
New York City, NY  
BSS210 - general illumination  
lighting design: Available Light  
photography: Nick Rezendes



CITY CENTER DC FITNESS CENTER

Washington, D.C.

BSS110 - cove lighting

architect: CORE

photography: Maxine Schnitzer Photography

# COVE

With four lamp formats available and over twenty models to choose from, Bartco Lighting has cove lighting covered. Fixture types range from the basic fluorescent strips with asymmetric reflectors to fixed staggered units to innovative adjustable stagger designs. LED models are available in a simple to install strip style with tool-less aiming or an architecturally integrated knife edge design.

**LED //**  
**BSS110** ———— **ADL200** ———— **T5 STRIPS //**  
**BFLFS-T5** ———— **BFL281-S** ———— **BSS110**

patent no. US 6,431,726 B1

OPTIONS | DIM | CU  
ACCESSORIES | LNS | TG

OPTIONS | DIM

OPTIONS | DIM | EM | CU  
ACCESSORIES | LNS | TG

OPTIONS | DIM | EM | CU  
ACCESSORIES | LNS | TG

**BFL282-S** ———— **BFL128** ———— **BFL270-S** ———— **BFL272-S** ———— **BFLSLM** ———— **BDS550** ————

OPTIONS | DIM | EM | CU  
ACCESSORIES | LNS | TG | QC | JP

OPTIONS | CU  
ACCESSORIES | TG

OPTIONS | CU  
ACCESSORIES | TG

remote ballast (ballast ordered separately)

OPTIONS | CU  
ACCESSORIES | TG

OPTIONS | CU  
ACCESSORIES | LNS | TG

OPTIONS | DIM | EM | CU  
ACCESSORIES | TG

**T8 STRIPS //**  
**BFL206** ———— **BFL207** ———— **BT5100** ———— **BFLFS-T8** ———— **BFL255-S** ———— **BFL254-S** ————

patent no. US 6,431,726 B1

OPTIONS | DIM | EM | CU  
ACCESSORIES | TG | QC | JP

OPTIONS | DIM | EM | CU  
ACCESSORIES | TG | QC | JP

OPTIONS | DIM | EM | CU  
ACCESSORIES | TG | QC | JP

OPTIONS | DIM | EM | CU  
ACCESSORIES | LNS | TG

OPTIONS | DIM | EM | CU  
ACCESSORIES | LNS | TG

OPTIONS | DIM | EM | CU  
ACCESSORIES | TG | QC | JP

**BFL257-S** ———— **BDS850** ———— **BFL250-S** ———— **BFL208** ———— **BFL209** ————

OPTIONS | DIM | EM | CU  
ACCESSORIES | TG | QC | JP

OPTIONS | CU  
ACCESSORIES | TG

OPTIONS | CU  
ACCESSORIES | TG

remote ballast (ballast ordered separately)

OPTIONS | DIM | EM | CU  
ACCESSORIES | TG | QC | JP

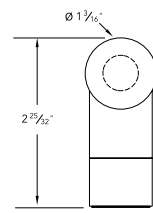
OPTIONS | DIM | EM | CU  
ACCESSORIES | TG | QC | JP

With a goal to present the bare fluorescent lamp in prominent manner, the Element series accomplishes this by elevating the lamps high above clean, small profile housings and concealing the sockets with simple, cylindrical covers. Whether surface mounted, suspended from a ceiling or recessed into a wall, the Element fixture provides a bold compliment to contemporary interiors.

# ELEMENT

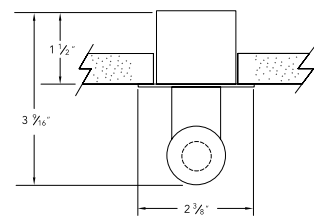
## T5 STRIPS //

### IEL5R



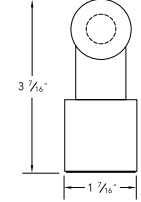
OPTIONS | CU  
ACCESSORIES | TG | LNS | BAC | PM  
remote ballast (ballast ordered separately)

### IEL5C



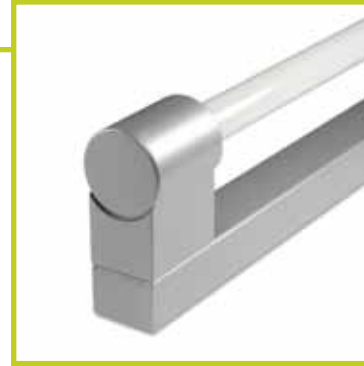
OPTIONS | DIM | EM | CU  
ACCESSORIES | LNS | TG

### IEL5H

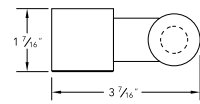


OPTIONS | DIM | EM | CU  
ACCESSORIES | LNS | TG | BAC | PM

IEL5R

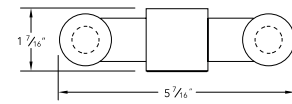


### IEL5S



OPTIONS | DIM | EM | CU  
ACCESSORIES | LNS | TG | BAC | PM

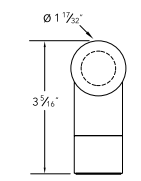
### IEL5DS



OPTIONS | DIM | EM | CU  
ACCESSORIES | LNS | TG | BAC | PM

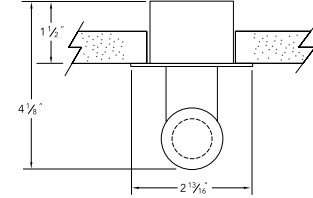
## T8 STRIPS //

### IEL8R



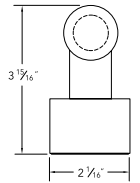
OPTIONS | CU  
ACCESSORIES | LNS | TG | BAC | PM  
remote ballast (ballast ordered separately)

### IEL8C



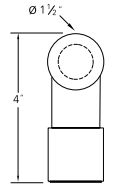
OPTIONS | DIM | EM | CU  
ACCESSORIES | LNS | TG

### IEL8H



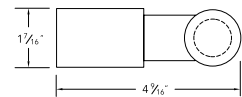
OPTIONS | DIM | EM | CU  
ACCESSORIES | LNS | TG | BAC | PM

### IEL8L



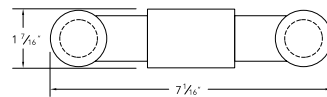
OPTIONS | DIM | EM | CU  
ACCESSORIES | LNS | TG | BAC | PM

### IEL8S



OPTIONS | DIM | EM | CU  
ACCESSORIES | LNS | TG

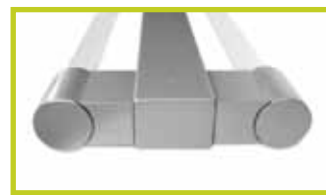
### IEL8DS



OPTIONS | DIM | EM | CU  
ACCESSORIES | LNS | TG | BAC | PM



IEL8H:  
shown with blade  
louwer accessory



IEL5DS:  
double T5 lamp

IEL8L:  
shown with perforated  
lens accessory



AMHERST COLLEGE  
Amherst, MA

IEL8L - decorative lighting  
lighting design: HLB  
photography: Ethan Drinker Photography





**FRIENDS SEMINARY SCHOOL**  
 New York, NY  
 IST5S & BC103 - general illumination  
 lighting design: PHT Lighting  
 photography: Peiheng Tsai

# ELYTRON

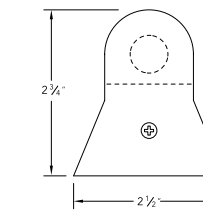
The Elytron luminaire evolved out of the need to provide a minimal, clean T5 and T8 strip fixture with a shielded lamp. The result is this group of six models of sheet formed housings, integrated socket covers, and variety of acrylic lenses and perforated steel shields. Model variants are available for surface, cable, and pendant mounting.



IST5R

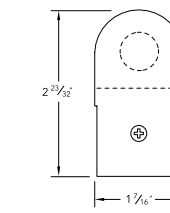
## T5 STRIPS //

### IST5Q



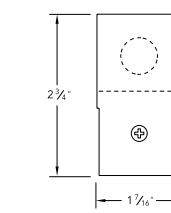
OPTIONS | EM | CU  
 ACCESSORIES | BAC | PM

### IST5R



OPTIONS | EM | CU  
 ACCESSORIES | BAC | PM

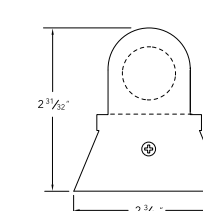
### IST5S



OPTIONS | EM | CU  
 ACCESSORIES | BAC | PM

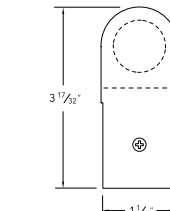
## T8 STRIPS //

### IST8Q



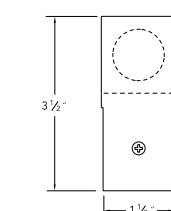
OPTIONS | EM | CU  
 ACCESSORIES | BAC | PM

### IST8R



OPTIONS | EM | CU  
 ACCESSORIES | BAC | PM

### IST8S



OPTIONS | EM | CU  
 ACCESSORIES | BAC | PM



IST5S:  
 detail of tandem lamp model



IST5Q:

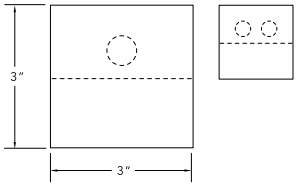
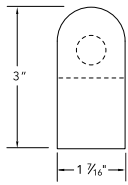
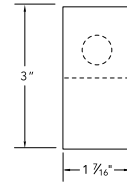
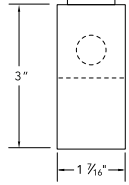
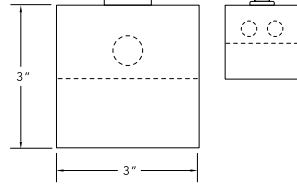


IST8S:  
 shown suspended  
 with perforated lens

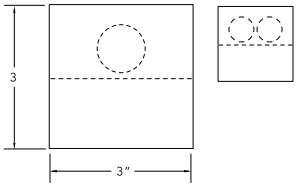
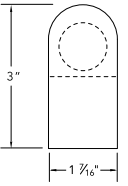
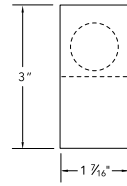
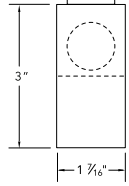
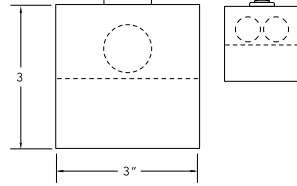
# ESSENCE

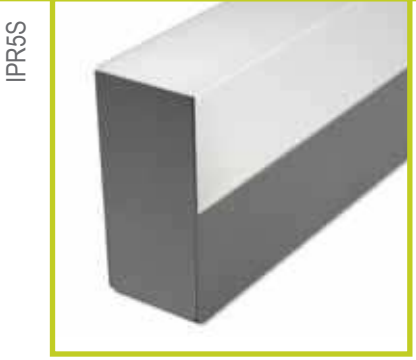
Paring the basic components of a strip light down to a minimum, the Essence models are stylistically little more than a clean, sheet formed housing and three sided lens or shield. Yet, their simple designs lend them to being used in a wide variety of applications. Adding further utility, dedicated models fitted with an occupancy sensor make for highly functional closet and stairwell lights.

## T5 STRIPS //

<p><b>IPR5MS</b></p>  <p>OPTIONS   DIM   CU   EM ACCESSORIES   BAC   PM</p>	<p><b>IPR5R</b></p>  <p>OPTIONS   DIM   CU   EM ACCESSORIES   BAC   PM</p>	<p><b>IPR5S</b></p>  <p>OPTIONS   DIM   CU   EM ACCESSORIES   BAC   PM</p>	<p><b>IPR5S-OCC</b></p>  <p>OPTIONS   DIM   CU   EM ACCESSORIES   BAC   PM</p>	<p><b>IPR5MS-OCC</b></p>  <p>OPTIONS   CU ACCESSORIES   BAC   PM</p>
--	---	---	---	---

## T8 STRIPS //

<p><b>IPR8MS</b></p>  <p>OPTIONS   DIM   CU   EM ACCESSORIES   BAC   PM</p>	<p><b>IPR8R</b></p>  <p>OPTIONS   DIM   CU   EM ACCESSORIES   BAC   PM</p>	<p><b>IPR8S</b></p>  <p>OPTIONS   DIM   CU   EM ACCESSORIES   BAC   PM</p>	<p><b>IPR8S-OCC</b></p>  <p>OPTIONS   DIM   CU   EM ACCESSORIES   BAC   PM</p>	<p><b>IPR8MS-OCC</b></p>  <p>OPTIONS   CU ACCESSORIES   BAC   PM</p>
---	--	--	--	--



IPR5S



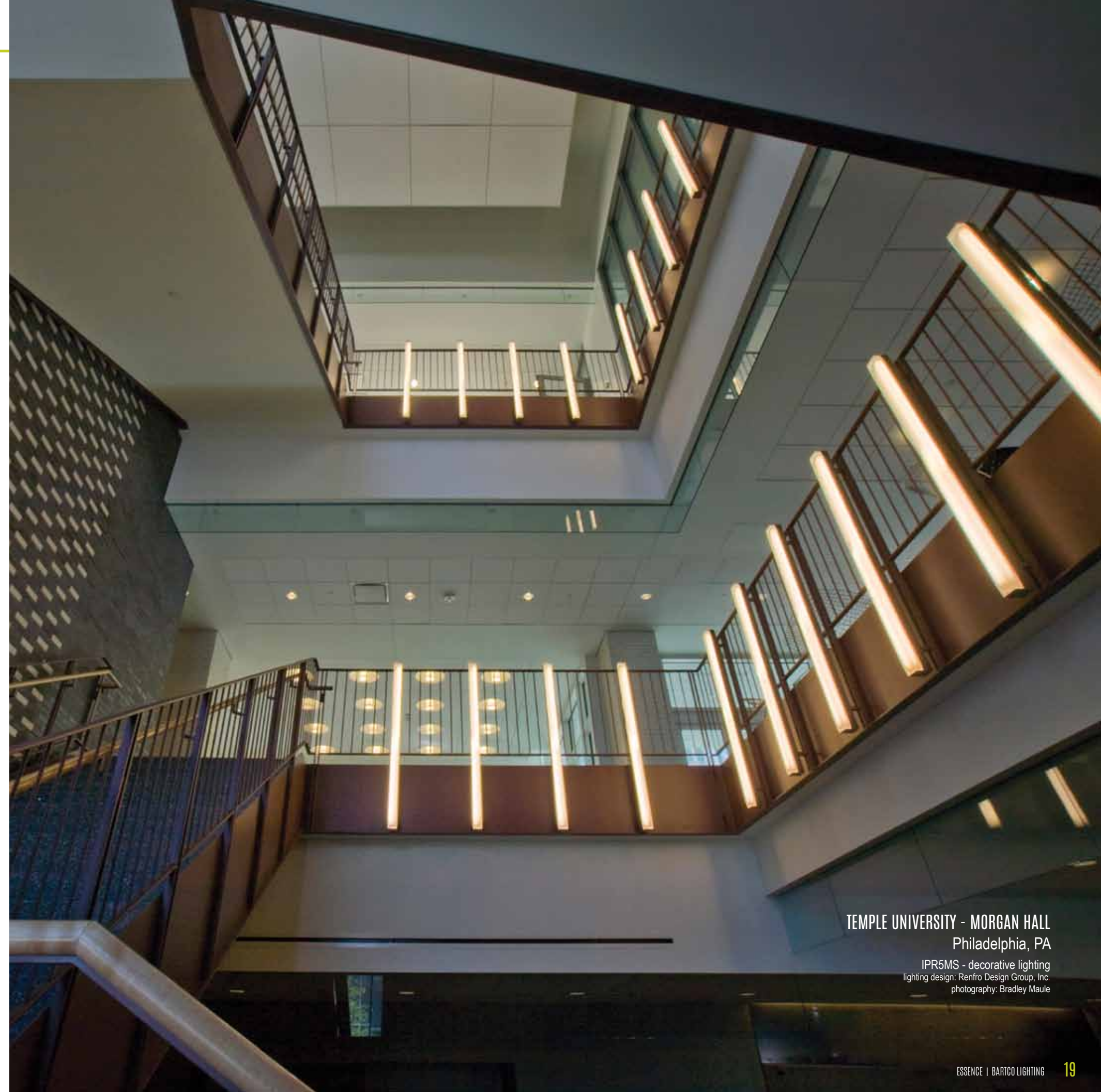
IPR8MS:  
shown with frosted lens option



IPR8MS:  
shown with custom perforated shield option



IPR5S-OCC:  
shown with occupancy sensor



TEMPLE UNIVERSITY - MORGAN HALL  
Philadelphia, PA

IPR5MS - decorative lighting  
lighting design: Renfro Design Group, Inc  
photography: Bradley Maule



K-STATION  
Portland, OR  
BC7364 - decorative lighting  
Custom luminaire derived from the STUDIO by Bartco Zag model  
lighting design: Ella Mills, Biella Lighting Design  
photography: ©2012 JOSH PARTEE

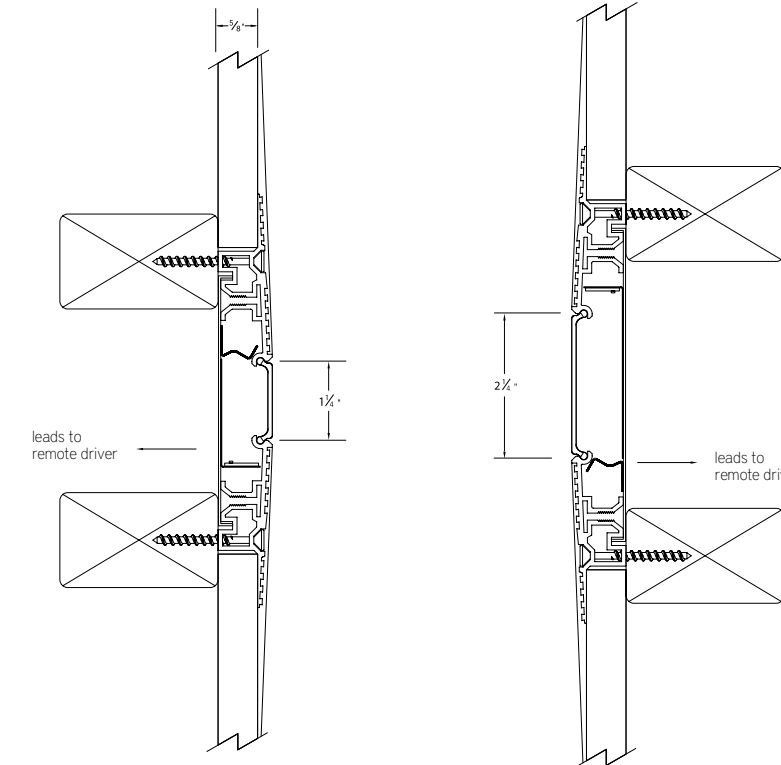
# INWALL

As its name suggests, the Inwall LED luminaire melds into a 5/8" thick wall or ceiling surface to create flush, continuous lines of diffuse light. Two initial aperture widths are offered for accent illumination, both available with several LED color temperatures and remote driver options.

LED //

BIW100

BIW105



OPTIONS | CU

OPTIONS | CU

# STUDIO

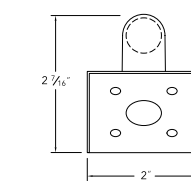
The Studio Zag luminaire literally takes linear fluorescent lighting in a new direction. No longer tied to the conventional method of surface or suspension mounting, the Zag can traverse space, undulating as it spans from one wall or ceiling plane to another. The bare lamp T5 fixture segments create dynamic, luminous movement in any space.



ZAG

T5 STRIPS //

ZAG



OPTIONS | DIM | EM | CU  
ACCESSORIES | TG



ZAG:  
shown with two joined fixtures  
in multiple positions

# STRIPS

Even with the broadening market adoption of solid state lighting, the linear fluorescent lamp is still a relevant source for many applications. Bartco Lighting offers dozens of linear T5 and T8 models from miniature, remote ballast profiles to versatile, multi-lamp strips.



MIT5 patent no. US 6,652,119 B1

## T5 STRIPS //

- BFL270 — BFL272 — BFLSA — BFLSAM — MIT5-1T — CB5

OPTIONS | CU  
ACCESSORIES | REF | LNS | TG  
remote ballast (ballast ordered separately)

OPTIONS | CU  
ACCESSORIES | REF | TG  
remote ballast (ballast ordered separately)

OPTIONS | CU  
ACCESSORIES | REF | LNS | MC  
TG | QC | JP | BAC

OPTIONS | CU  
ACCESSORIES | REF | LNS | MC  
TG | QC | JP | BAC

OPTIONS | DIM | EM | CU | CB  
ACCESSORIES | REF | LNS | MC | TG | QC | JP | BAC

OPTIONS | CU  
ACCESSORIES | REF | LNS | TG

## T8 STRIPS //

- BFL281 — BFL282 — BFL250 — BFL252 — BFL255 — BFL257

OPTIONS | CU  
ACCESSORIES | REF | LNS | TG

OPTIONS | DIM | EM | CU  
ACCESSORIES | REF | TG

OPTIONS | CU  
ACCESSORIES | REF | LNS | TG  
remote ballast (ballast ordered separately)

OPTIONS | CU  
ACCESSORIES | REF | TG  
remote ballast (ballast ordered separately)

OPTIONS | DIM | EM | CU | CB  
ACCESSORIES | REF | LNS | MC | TG  
QC | JP | BAC

OPTIONS | DIM | EM | CU | CB  
ACCESSORIES | REF | TG | QC | JP | BAC



## T8 STRIPS CONTINUED //

BFLBA-1T

OPTIONS | DIM | EM | CU | CB  
ACCESSORIES | REF | LNS | TG | QC | JP | BAC

BFL800-1T

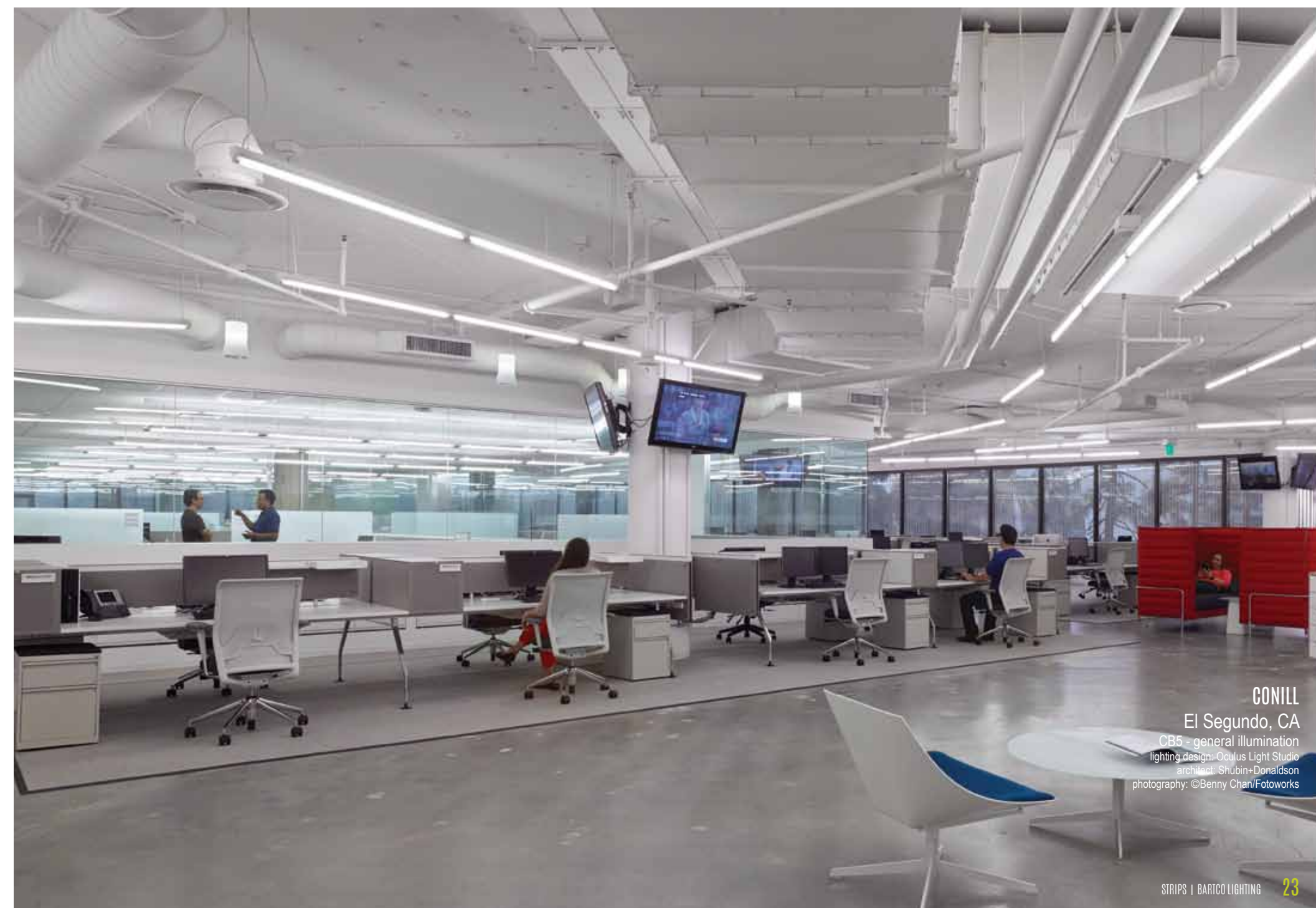
OPTIONS | DIM | EM | CU | CB  
ACCESSORIES | REF | LNS | TG | QC | JP | BAC

MIT8-1T  
patent no. US 6,652,119 B1

OPTIONS | DIM | EM | CU | CB  
ACCESSORIES | REF | LNS | TG | QC | JP | BAC

CB8

OPTIONS | DIM | EM | CU  
ACCESSORIES | REF | LNS  
TG | BAC



CONILL  
El Segundo, CA  
CB5 - general illumination  
lighting design: Oculus Light Studio  
architect: Shubin+Donaldson  
photography: ©Benny Chan/Fotoworks



RIVERS EDGE  
Boston, MA  
BSS501 - arm mounted lighting

# TUBULAR

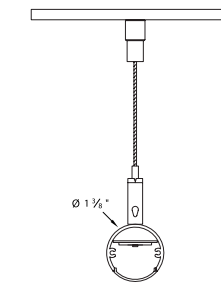


BSS510

Offered in three diameters from 1-3/8" to 3-1/2", the Tubular series LED luminaires are suitable for lighting small to large scale spaces. A frosted acrylic lens fills the aperture of sleek extruded aluminum housings to create diffuse lines of seamless light from the high quality LEDs. Each profile is available in three mounting configurations: cable suspended down light, arm mounted adjustable or cable suspended adjustable.

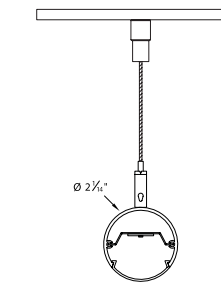
LED //

BSS500



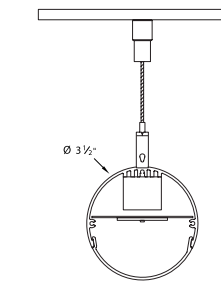
OPTIONS | DIM | EM | CU  
remote driver (ordered separately)

BSS510



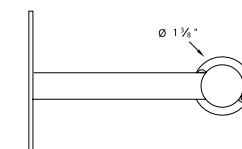
OPTIONS | DIM | EM | CU  
remote driver (ordered separately)

BSS520



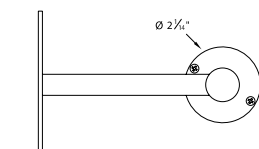
OPTIONS | DIM | EM | CU

BSS501



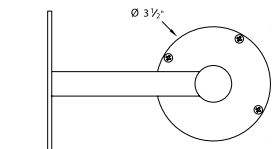
OPTIONS | DIM | EM | CU  
remote driver (ordered separately)

BSS511



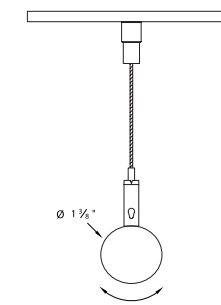
OPTIONS | DIM | EM | CU  
remote driver (ordered separately)

BSS521



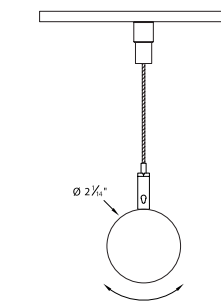
OPTIONS | DIM | EM | CU

BSS502



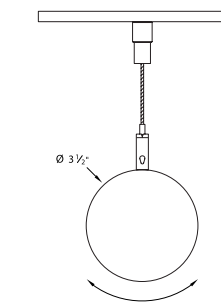
OPTIONS | DIM | EM | CU  
remote driver (ordered separately)

BSS512



OPTIONS | DIM | EM | CU  
remote driver (ordered separately)

BSS522



OPTIONS | DIM | EM | CU

# TASK

As a lighting category, Bartco Lighting manufactures a broad range of Task Light fixtures to suit any need. Products include a miniature, tubular line voltage LED, several extruded aluminum T5 and LED profiles, as well as sheet formed fluorescent and LED fixtures. Many of our models incorporate occupancy sensors and are available with on/off switches.



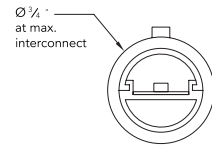
ECO5-JP

LED //

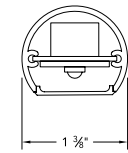
ECO5-JP

XLS8290

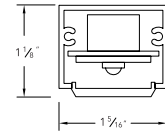
XLS8400



This item only available with 120V



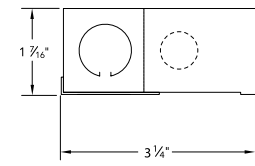
OPTIONS | CU  
ACCESSORIES | MC | BAC | BAM  
(LED fixture with standard flat lens)  
remote driver (ordered separately)



OPTIONS | CU  
ACCESSORIES | MC | BAC | BAM  
(LED fixture with standard flat lens)

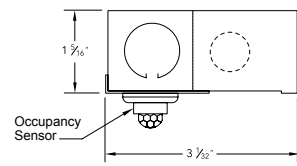
T5 STRIPS //

R10UC



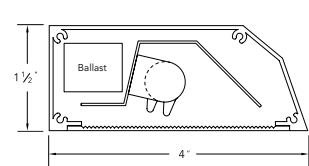
OPTIONS | CU  
includes R10 LED lamp & driver

BSS300



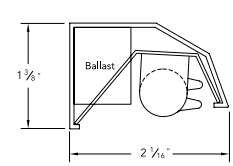
OPTIONS | CU  
includes 120V ECO5 LED lamp

BC7502



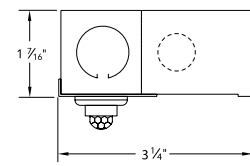
OPTIONS | CU  
ACCESSORIES | MC

BFL293



OPTIONS | CU  
ACCESSORIES | LNS | MC | TG | EC | FF

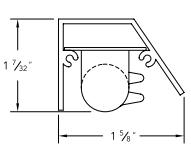
MiT5-1S-UC-OCC



OPTIONS | CU

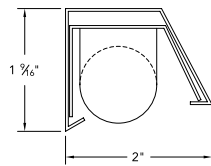
T8 STRIPS //

BFL297



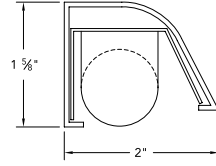
OPTIONS | CU  
ACCESSORIES | MC | TG | EC | FF  
remote ballast (ballast ordered separately)

BFL100



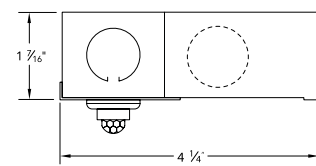
OPTIONS | CU  
ACCESSORIES | MC | TG | EC | FF  
remote ballast (ballast ordered separately)

BFL300



OPTIONS | CU  
ACCESSORIES | MC | TG | EC | FF  
remote ballast (ballast ordered separately)

MiT8-1S-UC-OCC



OPTIONS | CU



LAM PARTNERS PROJECT

ECO5-JP - undershelf lighting  
lighting design: LAM Partners





**BOSTON CONSERVATORY**  
Boston, MA  
BC7534  
lighting design: LAM Partners  
architect: Utile  
photography: Nick Rezendes





**FRIENDS SEMINARY SCHOOL**

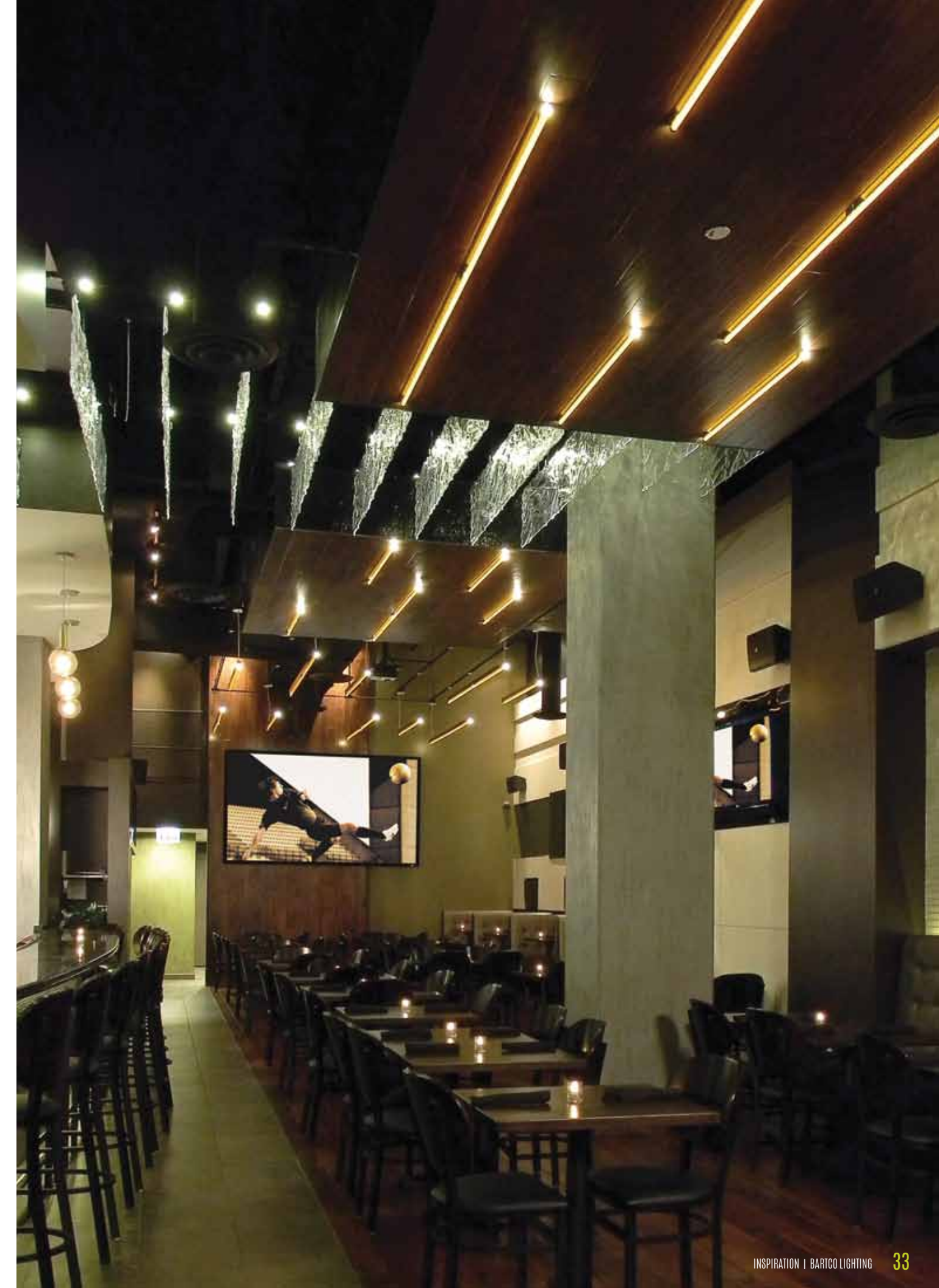
New York, NY

BC103 & IST5S  
lighting design: PHT Lighting  
photography: Peiheng Tsai

**JIMMY GREEN BAR & GRILL**

Chicago, IL

BT6200 & BT6300  
lighting design: Design Bridge  
architect: Design Bridge  
photography: Design Bridge





**FIRST SOUTHERN BAPTIST CHURCH**  
 Dallas, TX  
 IEL5H  
 lighting design: The Lighting Practice  
 photography: Jered E. Widmer

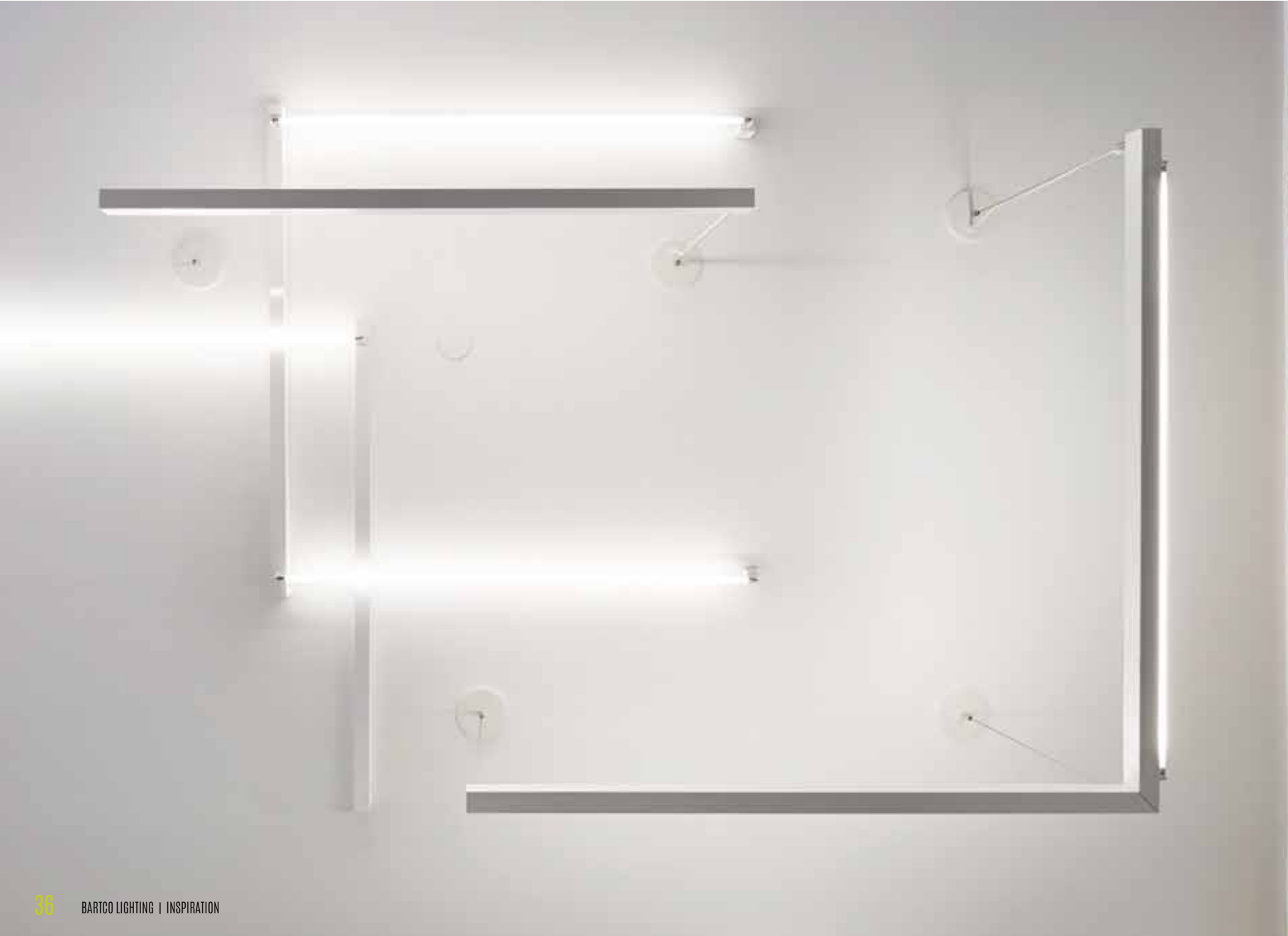


**PARRISH ART MUSEUM**  
 Water Mill, NY  
 BC245  
 lighting design: ARUP  
 architect: Herzog & de Meuron  
 photography: ©Ronald Halbe 2012





**STRIPES HEADQUARTERS**  
New York, NY  
BT6400 & STUDIO by Bartco  
design firm: ICRAVE  
photography: John Muggenborg



**SOLESTRUCK**  
Portland, OR  
MIT8 & BFL257  
architect: Skylab Architecture  
photography: Boone Speed



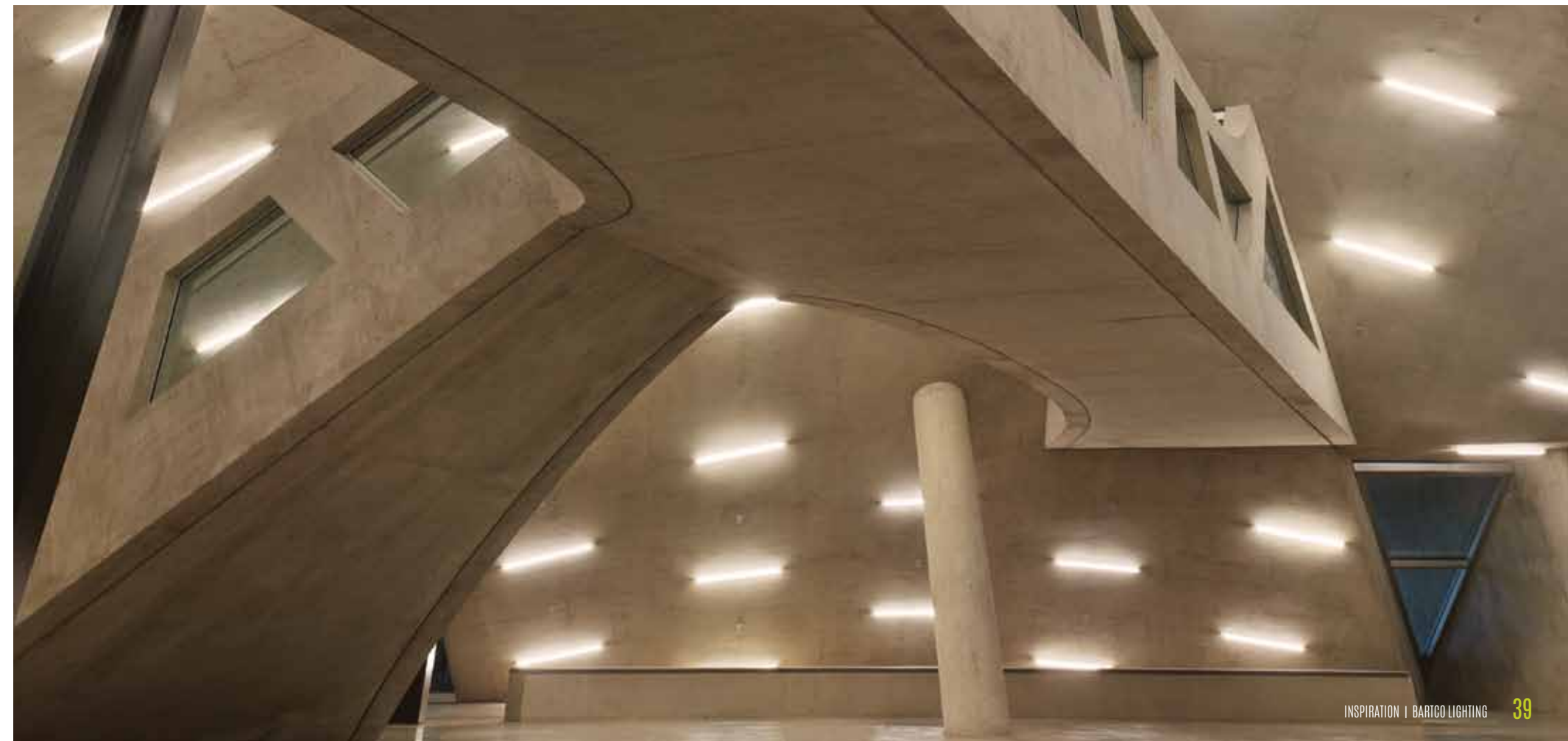
**BARCLAY'S CENTER**  
Brooklyn, NY

BT6200  
lighting design: Goldstick Lighting Design  
architect: Ellerbe Becket  
photography: Nick Rezendes



**MILSTEIN HALL**  
Ithaca, NY

BC7373 & BC147  
architect: Office of Metropolitan Architecture  
photography: Brad Feinkopf ©2011





**SKIRBALL CENTER**  
Los Angeles, CA  
BFL256  
lighting design: LAM Partners  
photography: Doug Salin



**BRIGHTCOVE HEADQUARTERS**  
Boston, MA  
BC7440  
lighting design: LAM Partners  
architect: Elkus Manfredi  
photography: Jasper Sanidad





**THE C. V. STARR EAST ASIAN LIBRARY**  
Berkeley, CA

BAM292- task light  
lighting design: Horton Lees Brogden Lighting Design  
architect: Tod Williams Billie Tsien Architects



**COOPER HOSPITAL**  
Philadelphia, PA

BSS110 - cove lighting  
lighting design: Ewing Cole  
photography: Halkin Mason Photography



bartcoLIGHTING.com | 714.230.3200 | 5761 Research Drive Huntington Beach, CA 92649

© 2015 Bartco Lighting, Inc. All Rights Reserved. This catalog is intended to be a guide. Products are subject to change without notice. Please consult website cutsheets or the factory for specifics. The products in this catalog are protected by patents and patents pending. No reuse or reproduction of photographs, drawings, or copy is allowed. Bartco Lighting reserves the right to discontinue or to change design or technical specifications of any product at any time without notification. All lamps must be ordered/specified separately. Not all fixtures can be used with all light sources. Elytron Collection, Essence Collection, Element Collection, BAM, MIT5, MIT8, All Weather, BT6, BT5, STUDIO by bartco, ECO5, ECO8, R10, Bodhi, and Tubular are trademarks of Bartco Lighting, Inc.

**b a r t c o**  
VISIONS BROUGHT TO LIGHT™