



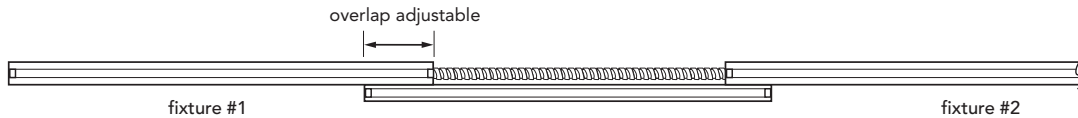
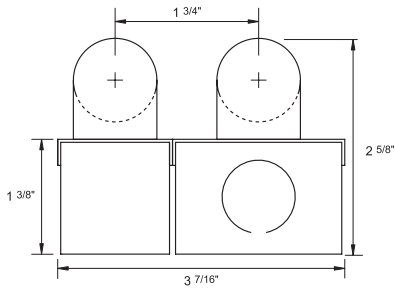
# QFS-T8

type: \_\_\_\_\_

## LINEAR T8 FLUORESCENT

Flip and Slide adjustable stagger T8 fluorescent fixture

- SPECIFICATIONS |**
- Fully assembled housing is formed and welded, 20 ga. steel, chemically treated to resist corrosion and enhance paint adhesion
  - Standard finish is high reflectance white powder coat, applied post production
  - Knock-outs accept standard electrical fittings (by others)
  - Rotational locking lamp holders
  - Available for two T8 17W, 25W or 32W linear fluorescent lamps
  - Adjustable lamp overlap of 4" to 16"
  - Standard universal voltage electronic high power factor ballast is pre-wired to the lamp holders
  - UL and ULC listed for dry and damp locations
  - IBEW
  - Ships in 5 days from order



### SPECIFICATION / ORDER FORMAT

### DIMENSIONAL INFO.

model no.	lamp	min. - max. length
QFS-T817	2 x 17w T8	36-13/16" - 44-7/8"
QFS-T825	2 x 25w T8	56-13/16" - 68-7/8"
QFS-T832	2 x 32w T8	80-3/4" - 92-3/4"



**bartco** LIGHTING  
leading the way and fighting it.™

tel 714.230.3200 | fax 714.230.3222 | bartcoLIGHTING.com

products subject to change without notice.