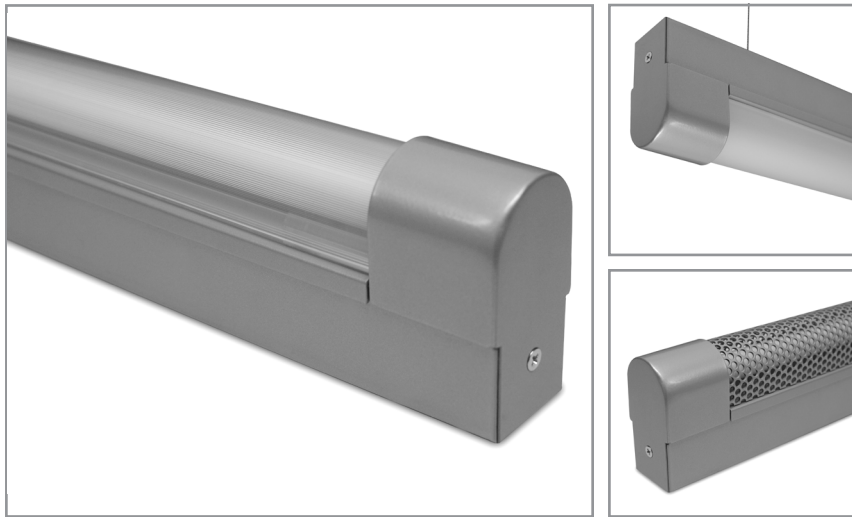


Round top, linear T5 fluorescent fixture with lens and decorative end caps

Project: _____ Type: _____



FEATURES

The Elytron Collection features clean, linear fixture bodies and simple decorative caps to conceal the darkness associated with the ends of T5 lamps and sockets. Though kept to a minimum, the profile is still large enough to accept a wide variety of popular ballasts. Multiple lens and three mounting options further broaden the versatility of this sleek luminaire.

SPECIFICATIONS

Fully assembled housing is formed and welded, 20 ga. steel, chemically treated to resist corrosion and enhance paint adhesion

Model variations offered for surface, cable suspended and pendant mount applications

Available in standard white, black, silver, platinum, bronze and primer powder coat, applied post production (consult factory for custom finishes)

Lens options include linear prismatic and frosted acrylic lens or perforated steel cover

Available for T5 14W, 21W, 28W, 35W and high output 24W, 39W, 54W, 80W linear fluorescent lamps in single, some tandem lengths and continuous runs

Standard ballast is specification grade 120V-277V program start (consult factory for other voltage options)

Dimming, emergency battery backup and specialized ballast factor options available (refer to supplemental ballast details sheet for availability)

Knock-outs on back of surface mount model accept standard electrical fittings by others (consult factory for other locations)

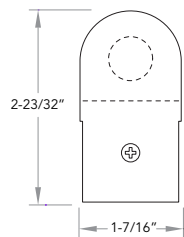
Rotational locking lamp holders

UL and C-UL listed for dry and damp locations

IBEW manufactured and labeled

Made in the U.S.A.

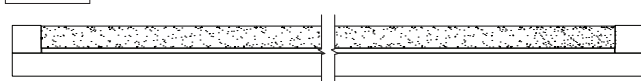
PROFILE



PLAN



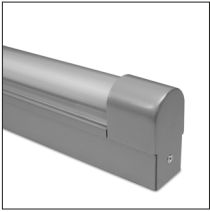


SIDE



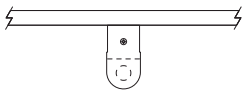
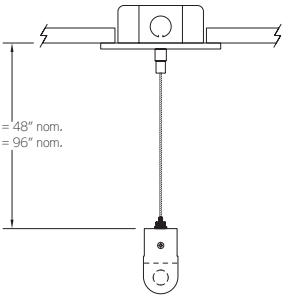
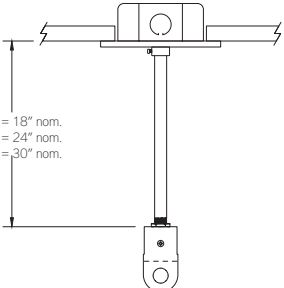
IST5R +

WATTS	VOLTAGE	BALLAST	LENS	MOUNT	FINISH
14: 14W - 22-9/16"	U: 120V-277V	[Custom Performance]	F: frosted	RUN CONFIGURATION	WH: white
21: 21W - 34-3/8"	347: 347V	PH: 1.15BF program start	P: linear prismatic	SIN: single	BL: black
28: 28W - 46-3/16"	CF: consult factory for specialize voltage	PN50: 0.50BF program start	Perf: perforated steel cover	STA: starter	SL: silver
35: 35W - 58"		PN60: 0.60BF program start		ADD: adder	BZ: bronze
24: 24W HO - 22-9/16"	[Non-Dimming]	PN70: 0.70BF program start	SM: surface mount	TER: terminator	PR: primer
39: 39W HO - 34-3/8"	PRS: program rapid start	PN85: 0.85BF program start	CM48: cable mount 48" cable length		CF: consult factory for custom color
54: 54W HO - 46-3/16"	[Dimming]	PN90: 0.90BF program start	CM96: cable mount 96" cable length		
80: 80W HO - 58"	MKX: Advance Mark 10	PN95: 0.95BF program start	PM18: pendant mount 18" stem length		
2121: 2x21W - 68-5/8"	VII: Advance Mark 7	[Emergency]	PM24: pendant mount 24" stem length		
2828: 2x28W - 92-1/4"	ESYS: Lutron EcoSystem	L50: Bodine LP500	PM30: pendant mount 30" stem length		
3939: 2x39W HO - 68-5/8"	EHD: Lutron EcoSystem H	L55: Bodine LP5500			
5454: 2x54W HO - 92-1/4"	HLM: Lutron Hi-Lume	L60: Bodine LP600			
	H300: Lutron Hi-Lume 3D	I28: Iota ISL-28			
	PHO: Sylvania Helios	I54: Iota ISL-54			
	DALI: Dali T5 (consult factory)	I540: Iota ISL-540-35W			
	SD95-50: Universal BallaSTAR				
	SD115-50: Universal BallaSTAR				

LENS OPTIONS

	ORDERING CODE	DESCRIPTION
	P	Linear prismatic acrylic lens
	F	Frosted acrylic lens
	PERF	Perforated steel cover in matching finish, 9/64" dia. holes on 3/16" centers, 51% open

MOUNTING

	ORDERING CODE	DESCRIPTION
	SM	<p>SURFACE MOUNT</p> <p>Use appropriate fastener through Ø3/16" holes in housing</p>
 <p>CM48 = 48" nom. CM96 = 96" nom.</p>	CM48 and CM96	<p>CABLE MOUNT</p> <p>Mounting option includes:</p> <ul style="list-style-type: none"> • Ø 1/16" x 48" (CM48) or 96" (CM96) aircraft cables • 18 gauge x 60" (CM48) or 102" (CM96) SJT power cable (in coordinating finish) • Bracket bars • Ø 5" white power feed canopy • Ø 2" white canopy • Ceiling couplers • Low profile cable grippers
 <p>PM18 = 18" nom. PM24 = 24" nom. PM30 = 30" nom.</p>	PM18, PM24, PM30	<p>PENDANT MOUNT</p> <p>Mounting option includes:</p> <ul style="list-style-type: none"> • Ø 1/2" x 18" (PM18), 24" (PM24) or 30" (PM30) white steel stems • Bracket bars • Ø 5" white canopies with integrated slip ring • Hex nuts